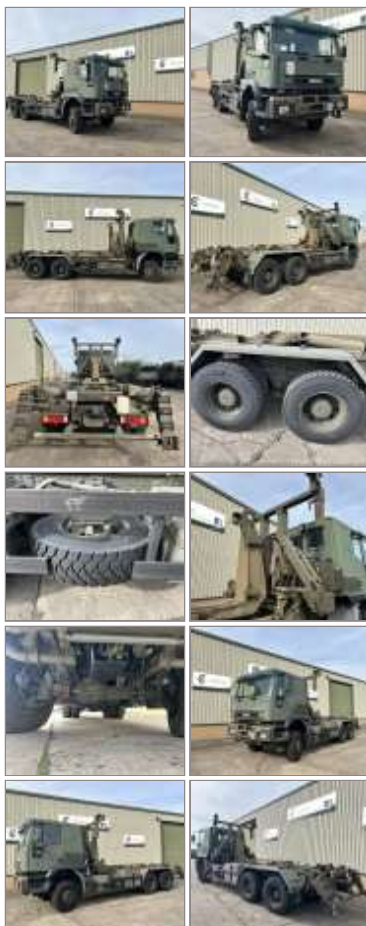
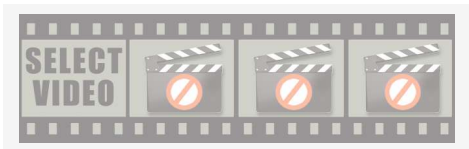


www.govsales.co.uk - The UK's leading suppliers of ex. military vehicles

Govsales - Ex MoD Surplus, Ex Army Trucks, Vehicles & Equipment

Iveco Eurotrakker 260E44 6x6 Hook Loaders - MoD Ref: 50573



Iveco Eurotrakker 260E44 6x6 Hook Loaders - MoD Ref: 50573

Details

Iveco Eurotrakker 260E44 6x6 Hook Loaders

Just arrived choice of units available fully operational in excellent condition

Multilift hooklift system supplied with container fixing frame. Operation from within the cabin or with ground controls

Vehicles can be supplied with optional 20ft flat rack bodies, fuel tanks, service units etc

Cruise control

Radio

Military ADR approved

Low kilometres

CATEGORY Drops Body / Multilift

MANUFACTURER Iveco

ENGINE Iveco Cursor 13 440HP
12,880cc

GEARBOX ZF Eurotronic 16 Speed 16AS
2601

BRAKES Air/Hydraulic

STEER Send us an email





TYRES	315/80R22.5
ELECTRICS	24 v
L x W x H	9.00 M x 2.50 M x 3.50 M
GROSS WEIGHT	26,000 Kg
HOURS / MILEAGE	80,000 Km
YEAR OF MANUFACTURE	2001
QTY AVAILABLE	10
EXPORT REQUIREMENTS	OGEL/SIEL Licence Required ...more

PRICE



REQUEST A QUOTE



All prices quoted are GBP U.K. Pounds Sterling Ex. Works excluding VAT where applicable and shipping / associated costs. Vehicles advertised are subject to remaining unsold. All prices quoted are based on "per individual unit" purchased, any reductions on advertised price for multiple item orders is subject to negotiation and is conducted at the time of inspection or provision of LOI. For complete Terms & Conditions See Main Website. Photo's shown above may represent a vehicle type rather than an actual vehicle, vehicles are available serviced and painted to customers preference. An export licence may be required for items sold to customers outside of the U.K.



Iveco Eurotrakker 260E44 6x6 Hook Loaders
Govsales of Ex Military vehicles for sale, Ex Military Land Rovers for sale, Ex army trucks for sale, MoD Surplus, Ex MoD and NATO Disposals, Ex Military and Nato Plant and Equipment

Send us an email

